

TRIBUTARIES

A NEWSLETTER FROM THE OLD LYME CONSERVATION TRUST, INC.

Incorporated 1966

www.olct.org

June 2005

Enjoy the Out of Doors Safely

We want everyone to enjoy all our parks and preserves this season and offer some suggestions to help you enjoy the out of doors safely.

Ticks can carry Lyme and other serious diseases. Most Lyme disease cases come from the nymph blacklegged tick. The nymph is so small it is difficult to locate. Ticks are most active during late spring and summer months. They attach to passers-by from ground litter and grasses. Children can be at risk if an adult does not help them check for ticks. Pets can bring ticks into the home. Your veterinarian can suggest effective forms of tick and flea control for your pets. Ticks may survive the washer but cannot survive in the hot dryer.

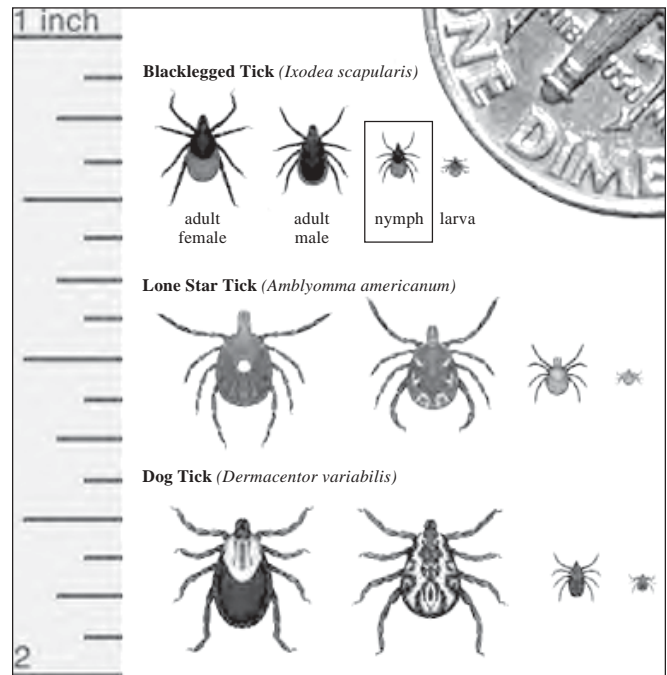
Here are some simple tips to help you and your family protect yourselves from tick bites.

- Wear light colored clothing (long pants) and tuck bottom of pants into socks.
- Do not wear open-toed shoes or sandals.
- Use a separate set of clothing for outdoor activity and spray with permethrin-bases repellent.
- Keep to the center of the trail.
- Remove, wash and dry clothing immediately; leave boots in the garage.
- Wash off with a cloth in the bath and check for attached ticks.

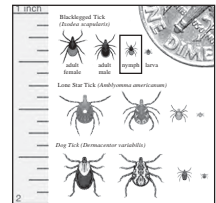
Finally, a tick bite does not automatically result in infection. Only a small percentage of nymph stage blacklegged ticks may be infected with Lyme disease.

In the Old Lyme area we also live with mosquitoes that can carry West Nile Virus and other diseases. Visit the Centers for Disease Control website: www.cdc.gov and click on "fight the bite" for more information. Mosquitoes are most active in the early morning and late afternoon. When heading out of doors use insect repellent. If you are going to be outside when mosquitoes are active, consider wearing long pants and a long-sleeve shirt.

Community-based mosquito control activities don't eliminate all bugs; therefore personal protection is very important. **If you are apprehensive about using DEET-based repellent look for the newly available Picaridin-based repellent.**



The "nymph tick" is highlighted above. (Art is enlarged).
Actual size is shown to the right.



Clean up of Bunt Karter Watch Rock Preserve

Watch Rock continues to be the #1 waterside park in Old Lyme. Most visitors from last year were responsive to our efforts to "pack out what you pack in". The addition this year of a Port-o-Potty may alleviate some of the problems. Our small maintenance crew will attempt to keep up with the Watch Rock trail improvements in order to keep Old Lyme's premier waterfront park an inviting place.

Please remind those you see with fishing gear or crab traps to remove all their trash. Fishing line fouls the water's edge and can end up in the nearby Osprey nests wrapped around the young birds, which perish from strangulation. Help keep Watch Rock and all of Old Lyme's parks clean – Pack out what you Pack In!

Midsummer Festival

OLCT will participate in the Hands-On, Minds-On section at the Old Lyme Midsummer Festival. The Midsummer Festival begins with art openings as well as a free public concert on the grounds of the Florence Griswold Museum on Friday, July 29th. The Festival continues on Saturday, July 30th, with an array of art shows, free entertainment and food. The Museum hosts an open-air farmers' market as well as the Hands-On, Minds-On Education Area that features hands-on projects presented by an impressive list of cultural organizations from Southeastern Connecticut.

For additional information, visit the Florence Griswold Museum web site (www.florencegriswoldmuseum.org).

Please visit the Old Lyme Conservation Trust on Saturday, July 30th between 10am and 3pm in the Hands-On, Minds-On Educational Area (Hartman Education Center and the lawn of the Museum). Come by to perform a fun art project related to nature and to get more information about OLCT and its activities and properties!

Scholarship Open to Students

OLCT is pleased to be able to provide the Bud Twin-ing scholarship to college students who are residents of Old Lyme and who are pursuing college degrees in environmental science, environmental studies, ecology, conservation biology, or related areas.

The Trust will provide one \$1,000 scholarship for a qualified student on a competitive basis. Application forms are available on our web site, www.olct.org, or by writing to the Old Lyme Conservation Trust, Inc. (P.O. Box 163, Old Lyme, CT 06371).

All application materials should be sent to the address listed on the application form, no later than July 30th, 2005. Awards for 2005 will be announced on August 30th.

Photo Contest for Amateur Photographers

The Lyme Land Conservation Trust, Inc. and the Old Lyme Conservation Trust, Inc. are jointly sponsoring a photo contest for pictures taken in our towns.

The contest is open to amateur photographers only and will run from May 1, 2005 to January 31, 2006. There is a separate youth category for those 16 years and younger. The judges will award prizes in March 2006 for the best artistic composition in the following four categories: Landscapes/Waterscapes, Plants, Wildlife, and Cultural/Historic – in addition to the youth prizes. The prizes are \$100 for first place, \$50 for second place and \$25 for third place.

Judges are William Burt, wildlife photographer and author, Dr. Emily Florentino, Curator of American Art at the Florence Griswold Museum and John Mitchell, an author and past editor at National Geographic Magazine and Sierra Club books. You can download the application form from our web site (www.olct.org) or send email to LOLPhotoContest@Go.Com for more information. Dust off your cameras and plan to get outdoors and start taking some pictures for the photo contest!

Cub Scouts

OLCT extends its sincere thanks to the Bear Den of Cub Scout Pack #27 for their excellent clean up of the Bunt Karter Watch Rock Preserve on April 24th.

This enthusiastic group of seven and eight year-old future conservationists will be presented with a Cub Scout Conservation Award for a series of environmentally-oriented activities they have recently completed, including the Watch Rock clean up.



WILLIAMS SCHOOL: In observance of Earth Day, Old Lyme resident Emily Devoe (pictured far right) organized a clean up of Pilgrims Landing, located off of Rt. 156 along the Connecticut River. Motivated by her concern over the amount of garbage that regularly accumulates there, Emily lead a clean up of the site with the assistance of her Williams School classmates that yielded over fifteen large bags of garbage! Mike Kiernan of the Old Lyme Conservation Trust was invited to address the group and share some information about the ecology and importance of the Connecticut River Estuary. Great work Emily and colleagues!

May is the time of the year birders like most!

*Article and photos
courtesy of Hank Golet*



This is the time of the year that birders look forward to most. The quiet of the winter woods has vanished and now they are alive with the songs of warblers, vireos, tanagers, orioles, thrushes and other neotropical species that have left their winter homes and migrated here to the Northeast where they will nest and raise their young. An early morning walk through any of the OLCCT preserves could turn up 20 or more of these beautiful songbirds.

Shorebirds, which also winter in the southern US, Central and South America are increasing in numbers toward the end of May. Most will travel to the arctic and subarctic regions of North America to nest and are only passing through our region. Sandpipers, plovers, dowitchers and perhaps a whimbrel can be found at Griswold Point and Watch Rock mud flats where they pause to fuel up for the rest of their journey. Piping Plovers, which do nest at Griswold Point, arrive around March 20th. I was told by

Dave Gumbart, of The Nature Conservancy, that there are five pair in the Griswold Point area and at least one pair already has chicks. It is critical at this time (or any time for that matter) that dogs are not allowed to roam free on these beaches.

The first Ospreys, which migrate in from South America, arrive around March 10th with most coming in during the last week of the month. Most are incubating by now and some of the early nesters have chicks. There is an active Osprey nesting platform on OLCCT property across the bay from Watch Rock.

Bluebirds are nesting successfully in some of the nest boxes constructed and installed by high school student members of the Green Crew and some OLCCT members. The Bluebird pictures were taken at Talcott Farm where two of the nest boxes were placed.

OLD LYME CONSERVATION TRUST MEMBERSHIP FORM

Please join us in preserving Old Lyme's Open Space!

Complete this form and return to: Old Lyme Conservation Trust, Post Office Box 163, Old Lyme, CT 06371

Name _____

Address _____

Telephone _____

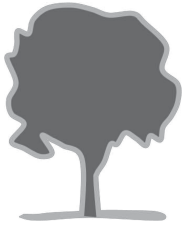
E-Mail _____

Tax-Deductible Membership:

_____ Single (\$25)
_____ Family (\$50)
_____ Additional donation

- ☐ Matching gift from company.
☐ **YES**, I would like to volunteer!
Please call me.

Note: If you are employed by Pfizer, J.P. Morgan Chase or Merrill Lynch, the company may match your contribution if you fill out their matching gift form and send it along with your donation.



Old Lyme Conservation Trust, Inc.

Post Office Box 163
Old Lyme, CT 06371

PRST STD
US Postage Paid
Permit 81
Old Lyme, CT 06371

Postal Patron

Old Lyme, CT 06371

Trips to the Fish Ladder

Ellie Czarnowski led several spring evening walks to the George & Woodward H. Griswold Preserve. A group of about 20 anxious anadromous fish-venturers braved twilight to catch the yearly migration in motion. The alewife is an important member of the SE Connecticut food chain. It supports the ospreys, the otter, and many other animals living in our wooded areas.

We watched the fish through the viewing window while they rested before climbing the second ladder into Mill pond. We strolled through the woods and heard the beaver slap its tail on the water in consternation at our nightly visit. Join us for more evening walks when the eel start to migrate. Check our website www.olct.org for details.

